



NOVA  **KOOL**

Mobile and Off Power
Grid Refrigeration



Nova Kool has been manufacturing mobile DC & AC/ DC powered refrigeration for over 30 years in North America. We use many of the same components today as we did in the early years. We do this because it works. We have a quality refrigerator which is designed to meet your requirements. With fewer moving parts the unit is simple and reliable.

If you have a problem or a question about your Nova Kool, we encourage you to call us direct. We will pick up the phone and answer your question in person.

It is important to us that you are happy, as our best advertisement is by word of mouth from our satisfied customers.



Strong and efficient evaporator plates



Positive latching

We run on Multiple Voltage

**DC only units
Run on 12 or 24 volts DC**

**AC /DC units
Run on 12 or 24 volts DC
and 110 or 220 volts AC 50-60 Hz**



Smart flip up shelves



Accurate thermostat



Efficient reciprocating compressor

**1578 Hartley Ave
Coquitlam B.C.
V3K 7A1
Canada (west coast)
604-523-6515
fax 604-523-6674
www.novakool.com
email: novakool@novakool.com**



R1200



**Single door refrigerators
under 25 inches (635mm) high**

NOVA  KOOL

**34 liter
1.2 cu.ft.**



Simple

Efficient

R1600



**36 liter
1.3 cu.ft.**



Quiet

Reliable

R1900



**54 liter
1.9 cu.ft.**



Safe

Optional fan available on all single door units

R2600



**68 liter
2.4 cu.ft.**

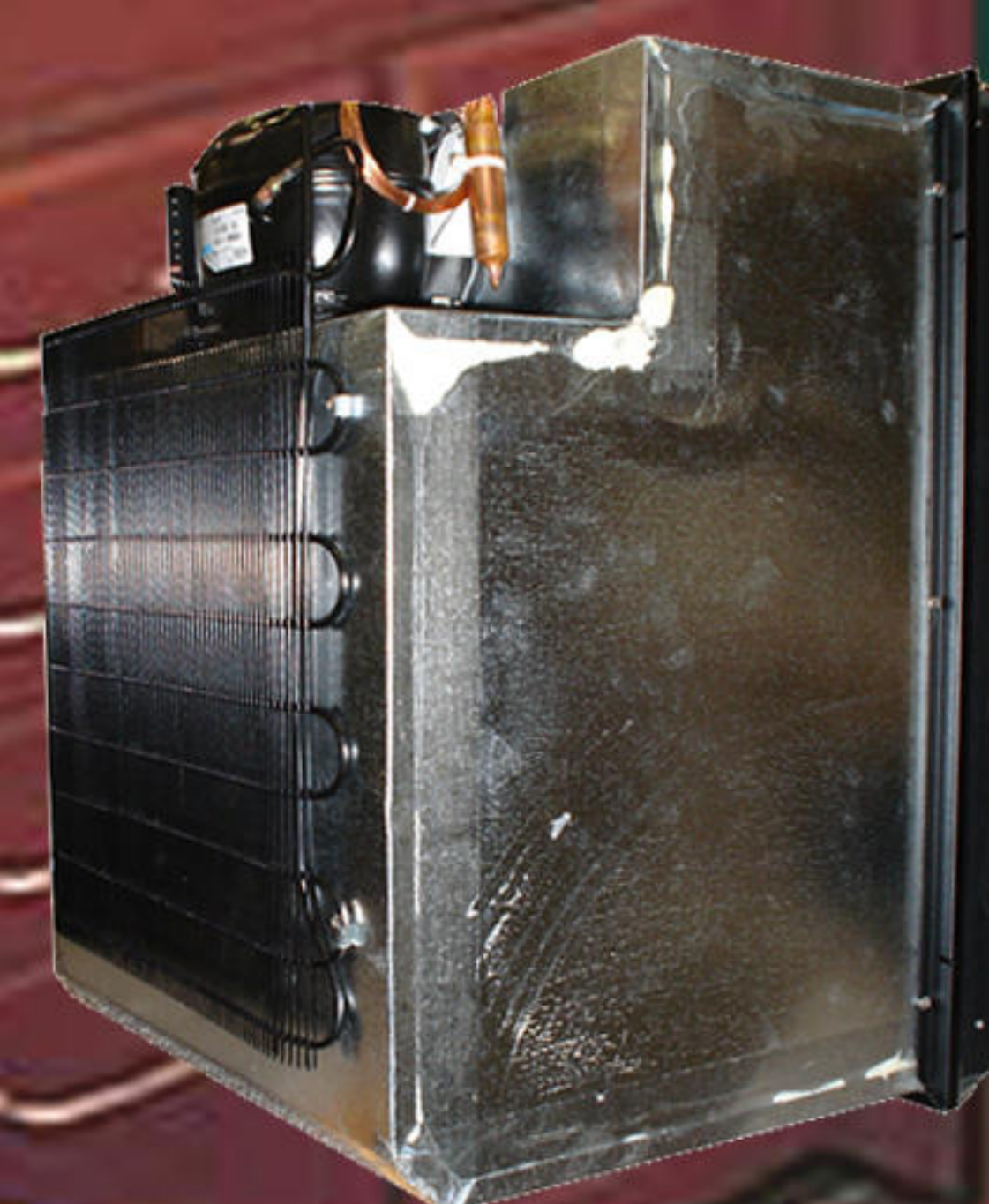


**All units have
low voltage
battery protection
while running
on DC power.
This helps prevent
premature
battery failure.**

R3000



**70 liter
2.5 cu.ft.**



**Single door refrigerators
over 25 inch (635mm) high**

**Designed
for
mobile
and
off power
grid
applications**

R2300



**2.1 cu.ft.
59 liter**



R3100



**3.0 cu.ft.
85 liter**



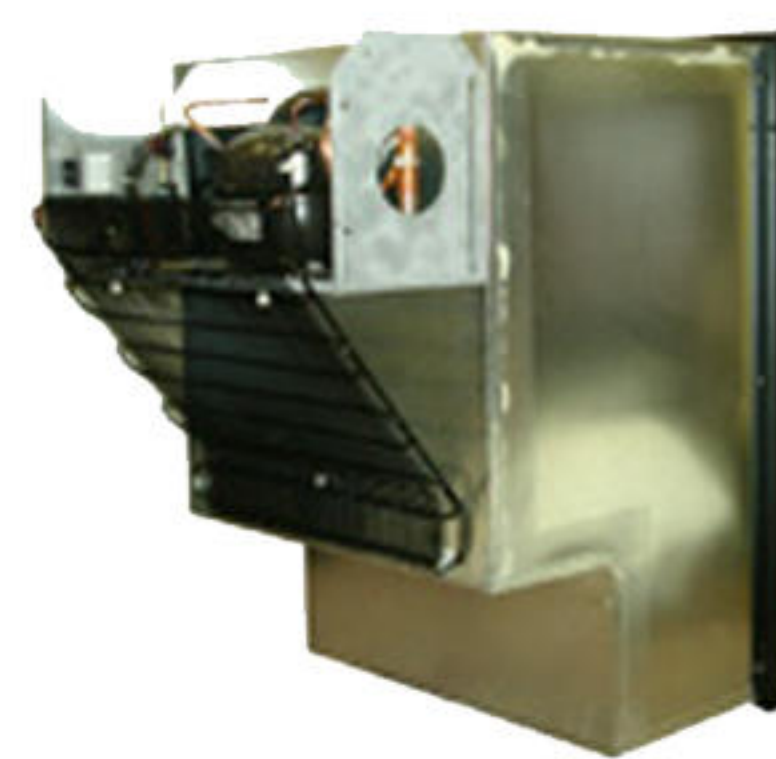
R3800



**3.5 cu.ft.
100 liter**



**R3803
Chinehugger**



**All models will
operate at up to a 30°
angle and maintain
cooling efficiency.**

R4500



**4.3 cu.ft.
122 liter**



**All single door fridges
over 25 inches tall are
available without the
freezer compartment
for an all fridge design.**



R5810



**5.8 cu.ft.
164 liter**



**Big on the inside
small on the outside**

**We fit where
others will not**

RFU9000 and RFU8220
ventilate from the front so
no additional ventilation
is required.

All two door units come
with a compressor cooling
fan.

RFU8220

**7.3 cu.ft.
206 liter**



RFU6200



**6 cu.ft
170 liter**



RFU8320

**7.3 cu.ft.
206 liter**



RFU6800

**6.8 cu.ft.
193 liter**



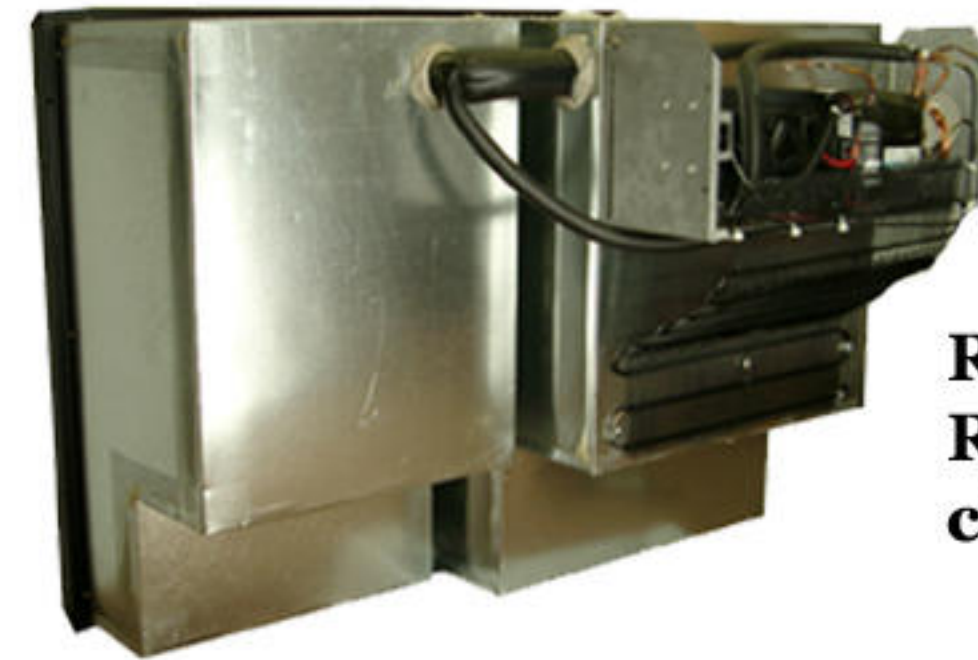
RFU9000

**9.1 cu.ft.
258 liter**



**5.6 cu.ft.
159 liter**

RFS6100



RFS6103
RFS6503
chine hugger

**designed for
mobile applications**

**corrosion resistant
components**

**multi voltage design
AC/DC or DC only**

134a refrigerant

RFS6500



**6.4 cu.ft.
181 liter**



shown with optional
flush mount kit

RFS7501



**7.5 cu.ft.
212 liter**



TL2500



**2.5 cu.ft.
71 liter**



shown with base to the side
to allow for a lower installation height

**TL2500 is for
built in mounting. The
cut out height is 27 inch
(686mm) with base on and
20 1/4 inch (514mm)
with base off**

Novakooler BCD 30



**31.5 quart
30 liter**



**Novakoolers can be
used for portable
cooling or freezing.**

Novakooler BCD 45



optional
AC adaptor

**47 quart
45 liter**

**Camping
Boating
RV
Trucking
Off road
or solar**

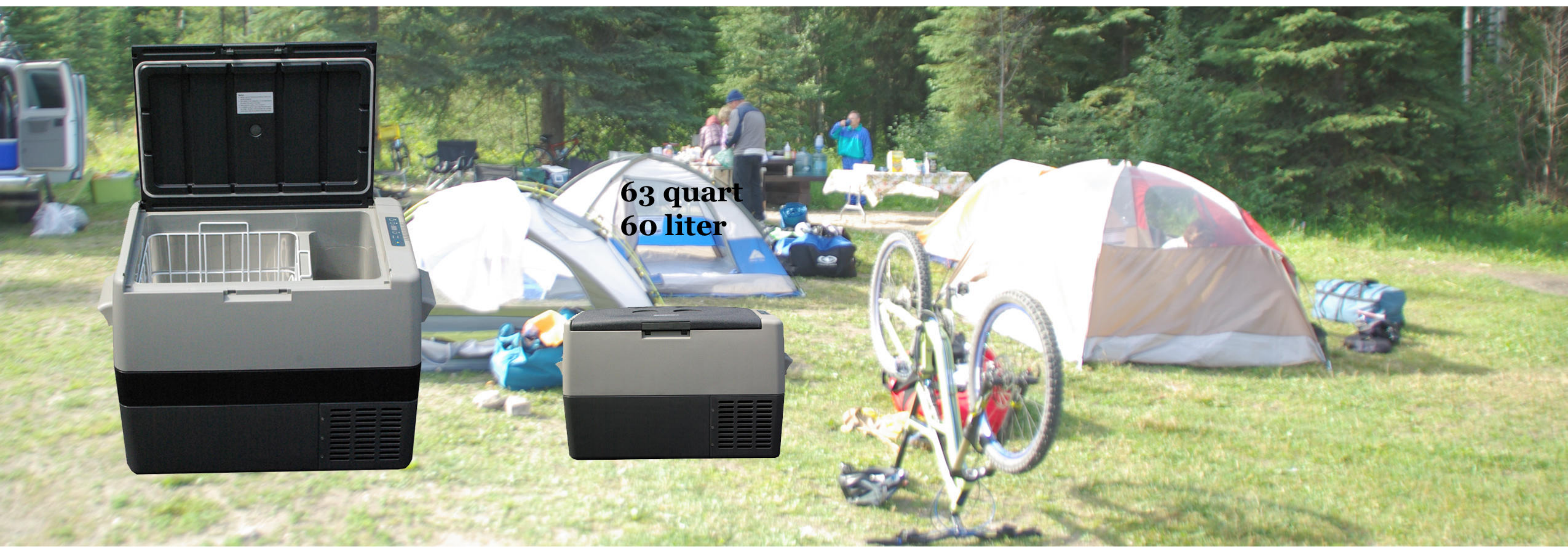


shown with optional
removable cover

Novakooler BCD 60



**63 quart
60 liter**



**Holding freezers
to fit many
cut out sizes**

**Powder coated satin
steel frames.
Stainless steel
hinges for strength
and corrosion
resistance.
Fully foamed doors
and cabinets for
added efficiency and
strength, on all
Nova Kool units.**

F1200

**1.2 cu. ft.
34 liter**



F1900

**1.9 cu.ft.
54 liter**



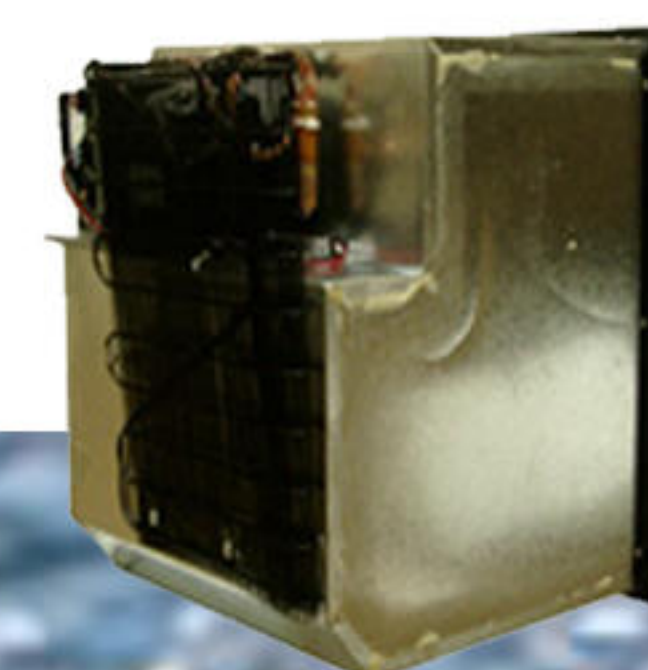
F2300

**2.1 cu.ft.
59 liter**



F2600

**2.4 cu.ft.
68 liter**



F3800

**3.5 cu.ft.
100 liter**



**5.8 cu.ft.
164 liter**



F5810



Specifications Imperial

Refrigerator Single Door	Interior Freezer		Weight Lbs	Cut Out H x W x D inch	Flange Dimension H x W inch	Panel Single Door H x W inch	Panel Two Door H x W inch	Light	Options see index below	Amperage Running* 12/24vdc
	Volume Cu. Ft	Volume Cu. Ft								
R1200	1.2	N/A	37	24 3/4x14x14.5-16	25 1/2x15 1/8	21 1/4x12 5/8		N/A		2.2 / 1.1
R1600	1.3	0.14	36	20 5/8x15 5/8x13 3/4	21 3/8x16 3/8	19 3/4x14 7/8		N/A	(W)	2.2 / 1.1
R1900	1.9	0.21	40	20 5/8x15 5/8x17 3/4	21 3/8x16 3/8	19 3/4x14 7/8		N/A	(W)	2.2 / 1.1
R2300	2.1	0.25	45	28 3/8x16 3/4x14	29 1/4x17 3/4	28x16 9/16		N/A	(W)(CH)	2.2 / 1.1
R2600	2.4	0.14	39	20 1/4x18x19 1/2	21x18 3/4	20 3/16x17 5/16		N/A	(W)	2.2 / 1.1
R3000	2.5	0.25	45	24 5/8x19 1/4x15 1/2	25 1/2x20 3/16	24x19		N/A	(W)	2.2 / 1.1
R3100	3	0.3	48	28 3/8x16 3/4x18 1/2	29 1/4x17 3/4	28x16 9/16		N/A	(W)(CH)	2.2 / 1.1
R3800	3.5	4.5	54	28 3/8x20 1/4x18	29 1/4x21 1/8	28x19 5/8		O	(W)(CH)(FL)	2.2 / 1.1
R4500	4.3	0.6	59	28 3/8x20 1/4x21	29 1/4x21 1/8	28x19 5/8		O	(W)(CH)(FL)	4.4 / 2.2
R5810	5.8	0.4	69	31 7/8x23 1/4x23 1/2 to 22	32 5/8x24 1/2	29 5/8x21 3/8		S	(FL)	4.4 / 2.2
Freezer Single Door										
F1200	1.2	1.2	37	24 3/4x14x14.5-16	25 1/2x15 1/8	21 1/4x12 5/8		N/A		4.4 / 2.2
F1900	1.9	1.9	40	20 5/8x15 5/8x17 3/4	21 3/8x16 3/8	19 3/4x14 7/8		N/A	(W)	4.4 / 2.2
F2300	2.1	2.1	49	28 3/8x16 3/4x14	29 1/4x17 3/4	28x16 9/16		N/A	(W)(CH)	4.4 / 2.2
F2600	2.4	2.4	43	20 1/4x18x19 1/2	21x18 3/4	20 3/16x17 5/16		N/A	(W)	4.4 / 2.2
F3800	3.5	3.5	58	28 3/8x20 1/4x18	29 1/4x21	28x19 5/8		N/A	(W)(CH)	4.4 / 2.2
F5810	5.8	5.8	69	31 7/8x23 1/4x23 1/2 to 22	32 5/8x24 1/2	29 5/8x21 3/8		N/A		5.2 / 2.6
Top Loading										
TL2500	2.5		58	18 3/4-27x20 1/4x18	21x18 3/4	20 3/16x17 5/16		N/A	(W)	4.4 / 2.2
BCD 30	31.5 qt		40	15x15 3/4x22				N/A	(P)	4.4 / 2.2
BCD 45	47 qt		53	17x15 3/4x25 3/4				N/A	(P)	4.4 / 2.2
BCD 60	63 qt		55	20 1/2x15 3/4x25 3/4				N/A	(P)	4.4 / 2.2
Refrigerator Two Door Side x Side										
RS4600	4.2	0.5	80	28 3/8x34 3/8x14	29 3/8x35 1/2	28x16 9/16	28x16 9/16	N/A	(W)(CH)(FL)	4.4 / 2.2
RS6100	5.6	0.7	86	28 3/8x37 7/8x16 1/2	29 3/8x38 7/8	28x19 5/8	28x16 9/16	O	(W)(CH)(F)(FL)	4.4 / 2.2
RS7600	7	0.8	93	28 3/8x41 1/4x18 1/2	29 3/8x42	28x19 5/8	28x19 5/8	O	(W)(CH)(F)(FL)	4.4 / 2.2
Refrigerator Freezer Two Door Side x Side										
RFS6100	5.6	2.1	80	28 3/8x37 7/8x16 1/2	29 3/8x38 7/8	28x19 5/8	28x16 9/16	O	(W)(CH)(F)	4.4 / 2.2
RFS6500	6.4	2.1	86	28 3/8x37 7/8x19 1/4	29 3/8x38 7/8	28x19 5/8	28x16 9/16	O	(W)(CH)(F)	4.4 / 2.2
RFS7501	7.5	2	86	34x28x22	35x29	33 3/4x9 5/16	33 3/4x17 7/8	S	(W)	4.4 / 2.2
Refrigerator Freezer Two Door Upright										
RFU6200	6	2.5	93	47 1/3x20 1/4x20 1/2	48 1/8x21	28x19 5/8	17 1/4x19 5/8	S	(W)	5.2 / 2.6
RFU6800	6.8	2.5	95	47 1/3x20 1/4x21 1/2	48 1/8x21	28x19 5/8	17 1/4x19 5/8	S	(W)	5.2 / 2.6
RFU8320	7.3	1.6	95	45 1/2x23 1/4x21 3/4	46x24 5/16	29 5/8x21 3/8	13 1/4x21 3/8	S		5.2 / 2.6
RFU8220	7.3	1.6	95	52 7/8x23 1/4x19 1/2	53 3/8x24 3/4	29 5/8x21 3/8	13 1/4x21 3/8	S		5.2 / 2.6
RFU9000	9.1	2.5	105	52 7/8x23 1/4x22 3/4	53 3/8x24 3/4	29 5/8x21 3/8	13 1/4x21 3/8	S		5.2 / 2.6

*Note: The amperage listed is while the unit is running. To determine 24hr consumption calculate the run time for 24hrs and multiply this by the listed amperage. Listed amperage will change with ambient temperature and unit door openings.

Options index

B	Black frame
CH	Chine hugger
F	Flush mounting frame kit
FL	Flat cooling plate all refrigerator no freezer
P	Portable
W	White frame

Key

N/A	Not Available
O	Optional
S	Standard

Specifications Metric

Refrigerator Single Door	Interior Volume Liters	Freezer Volume Liters	Weight KG	Cut Out H x W x D mm	Flange Dimension H x W mm	Panel Single Door H x W mm	Light	Options see index below	Amperage Running* 12/24vdc
R1200	34	n/a	17	628x355x368-406	648x384	540x320	N/A		2.2 / 1.1
R1600	36	4	16	524x397x349	543x415	502x378	N/A	(W)	2.2 / 1.1
R1900	54	6	18	524x397x450	543x415	502x378	N/A	(W)	2.2 / 1.1
R2300	59	7.1	20	721x425x356	742x451	712x421	N/A	(W)(CH)	2.2 / 1.1
R2600	68	4	18	514x457x495	533x476	513x440	N/A	(W)	2.2 / 1.1
R3000	70	7.1	20.5	650x488x393	647x513	609x482	N/A	(W)	2.2 / 1.1
R3100	85	8.5	22	721x425x470	742x451	712x421	N/A	(W)(CH)	2.2 / 1.1
R3800	100	12.7	24.5	721x514x457	745x536	712x499	O	(W)(CH)(FL)	2.2 / 1.1
R4500	122	17	27	721x514x533	745x536	712x499	O	(W)(CH)(FL)	4.4 / 2.2
R5810	164	11.3	31	809x590x597 to 559	829x622	752x543	S	(FL)	4.4 / 2.2

Freezer Single Door

F1200	34	34	17	628x355x368-406	648x384	540x320	N/A		4.4 / 2.2
F1900	54	54	18	524x397x450	543x415	502x378	N/A	(W)	4.4 / 2.2
F2300	59	59	22	721x425x356	742x451	712x421	N/A	(W)(CH)	4.4 / 2.2
F2600	68	68	19.5	514x457x495	533x476	513x440	N/A	(W)	4.4 / 2.2
F3800	100	100	26	721x514x457	742x533	712x499	N/A	(W)(CH)	4.4 / 2.2
F5810	164	164	31	809x590x597 to 559	829x622	752x543	N/A		5.2 / 2.6

Top Loading

TL2500	71		26	476-686x514x457	533x476	513x440		(W)	4.4 / 2.2
BCD 30	30		18	380x400x560				(P)	4.4 / 2.2
BCD 45	45		21	430x400x654				(P)	4.4 / 2.2
BCD 60	60		25	520x400x654				(P)	4.4 / 2.2

Refrigerator Two Door Side x Side	Interior Volume Liters	Freezer Volume Liters	Weight KG	Cut Out H x W x D mm	Flange Dimension H x W mm	Panel Single Door H x W mm	Panel Two Door H x W mm	Light	Options see index below	Amperage Running* 12/24vdc
RS4600	119	14.1	36	721x873x356	747x902	712x421	712x421	N/A	(W)(CH)(FL)	4.4 / 2.2
RS6100	159	19.8	39	721x962x419	747x988	712x499	712x421	O	(W)(CH)(F)(FL)	4.4 / 2.2
RS7600	198	22.6	42	721x1048x470	747x1067	712x499	712x499	O	(W)(CH)(F)(FL)	4.4 / 2.2

Refrigerator Freezer Two Door Side x Side

RFS6100	159	59	37	721x962x419	747x988	712x499	712x421	O	(W)(CH)(F)	4.4 / 2.2
RFS6500	181	59	39	721x962x489	747x988	712x499	712x421	O	(W)(CH)(F)	4.4 / 2.2
RFS7501	212	57	39	864x711x559	889x737	857x236	857x454	S	(W)	4.4 / 2.2

Refrigerator Freezer Two Door Upright

RFU6200	170	71	42	1203x514x521	1222x533	712x499	438x498	S	(W)	5.2 / 2.6
RFU6800	193	71	43	1203x514x546	1222x533	712x499	438x498	S	(W)	5.2 / 2.6
RFU8320	206	45	43	1155x591x552	1168x618	752x543	336x543	S		5.2 / 2.6
RFU8220	206	45	43	1343x591x495	1356x629	752x543	336x543	S		5.2 / 2.6
RFU9000	258	70.8	48	1343x591x578	1356x629	752x543	336x543	S		5.2 / 2.6

*Note: The amperage listed is while the unit is running. To determine 24hr consumption calculate the run time for 24hrs and multiply this by the listed amperage. Listed amperage will change with ambient temperature and unit door openings.

Options index

B	Black frame
CH	Chine hugger
F	Flush mounting frame kit
FL	Flat cooling plate all refrigerator no freezer
P	Portable
W	White frame



N/A	Not Available
O	Optional
S	Standard

Remote LT Series Specifications Imperial

	*Amperage 12 volt / 24 volt	Units	Dimensions	Weight		
LT201	2.2 - 6.6 / 1.2 - 3.3	BD35 with an over sized air cooled condenser	9W x 11L x 7.5 H	15 lbs.		
LT210	2.8 - 9 / 1.4 - 4.5	BD50 with an over sized air cooled condenser	9W x 11L x 7.5 H	16 lbs.		
All units include an automatic thermostat						
Cold Plates						
	Plate Surface Area	Configuration	Dimensions	Weight	Line set	Cold box size max 4 inches of foam insulation
F	528 sq. inch	3 plates which can be spread up to 18 inches apart	16L x 10H	5 lbs.	12 ft.	14 cu. ft.
F1	176 sq. inch	single plate	16L x 10H	4 lbs.	12 ft.	4 cu. ft.
F2	352 sq. inch	2 plates which can be spread up to 18 inches apart	16L x 10H	5 lbs.	12 ft.	8 cu.ft.
FM	336 sq. inch	single plate can be bent to fit application	32L x 10.5H	4 lbs.	12 ft.	10 cu.ft
FL	540 sq. inch	single plate can be bent to fit application	36L x 15H	5 lbs.	12 ft.	14 cu.ft.
RT4	336 sq. inch	formed box can be mounted vertically or horizontally	10.5W x 6.5H x 11.5D	5 lbs.	12 ft.	10 cu.ft.
RT6	405 sq. inch	formed box can be mounted vertically or horizontally	14W x 6 .75H x 12 D	7 lbs.	12 ft.	12 cu. Ft.
R26	160 sq. inch	single plate , U shaped	10W x 3H X 11D	4 lbs.	12 ft.	4 cu. Ft.
Custom		We can cut and bend to fit your application			up to 18 ft.	

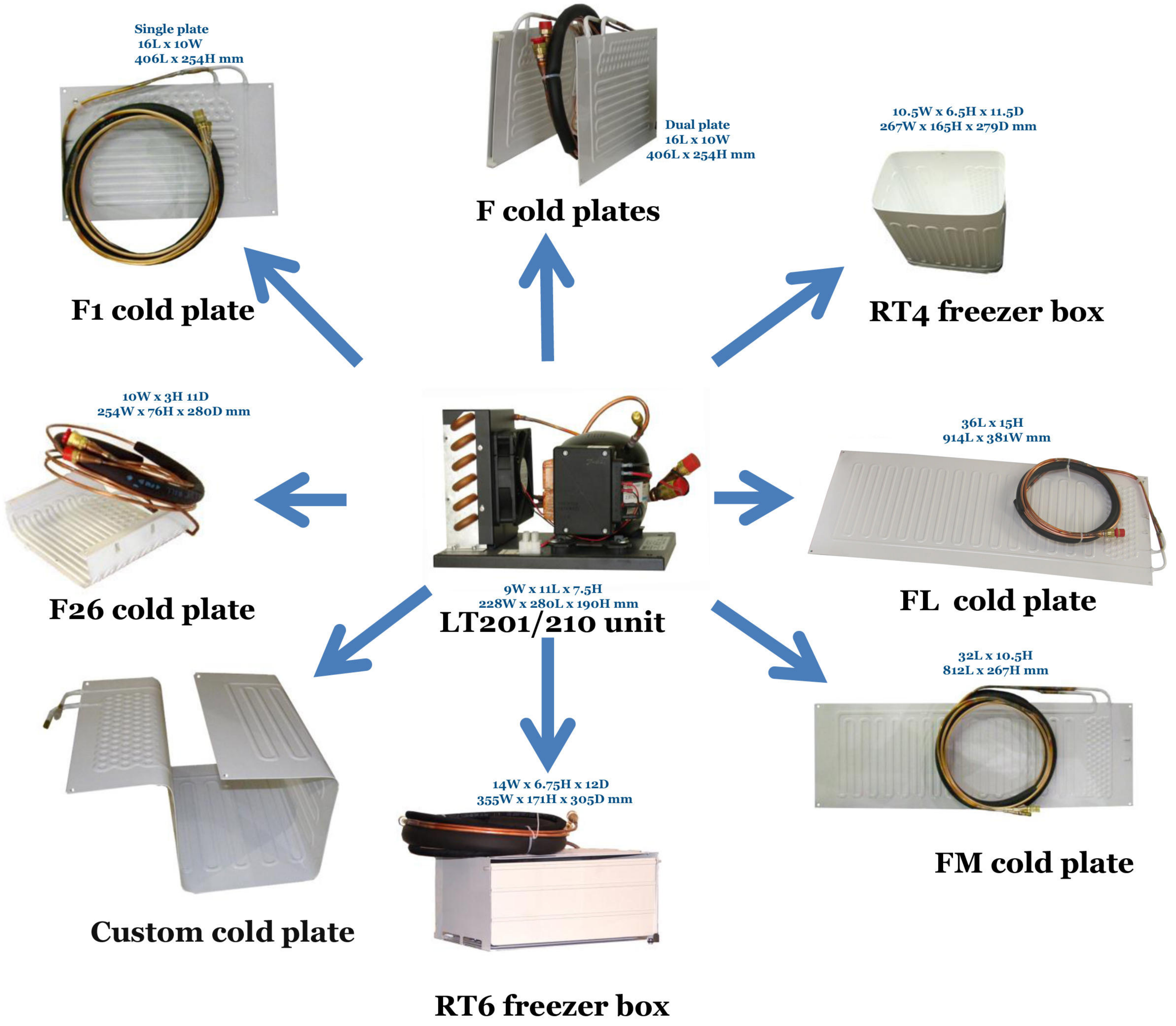
Specifications Metric

	*Amperage 12 volt / 24 volt	Units	Dimensions	Weight		
LT201	2.2 - 6.6 / 1.2 - 3.3	BD35 with an over sized air cooled condenser	228W x 280L x 190H mm	6.9 kg		
LT210	2.8 - 9 / 1.4 - 4.5	BD50 with an over sized air cooled condenser	228W x 280L x 190H mm	7.1 kg		
All units include an automatic thermostat						
Cold Plates						
	Plate Surface Area	Configuration	Dimensions	Weight	Line set	Cold box size max 101 mm of foam insulation
F	.34 sq. m	3 plates which can be spread up to 457 mm apart	406L x 254H mm	2 kg	3.7 m	396 ltr
F1	.114 sq. m	single plate	406L x 254H mm	2 kg	3.7 m	113 ltr
F2	.227 sq. m	2 plates the plates can be spread up to 457 mm apart	406L x 254H mm	2 kg	3.7 m	227 ltr
FM	.217 sq. m	single plate can be bent to fit application	812L x 267H mm	2 kg	3.7 m	283 ltr
FL	.348 sq. m	single plate can be bent to fit application	914L x 381H mm	2 kg	3.7 m	396 ltr
RT4	.240 sq. m	formed box can be mounted vertically or horizontally	267W x 165H x 279D mm	2 kg	3.7 m	283 ltr
RT6	.261 sq. m	formed box can be mounted vertically or horizontally	355W x 171H x 305 D mm	3 kg	3.7 m	339 ltr
R26	.114 sq. m	single plate , U shaped	254W x 76H X 280D mm	2 kg	3.7 m	113 ltr
Custom		We can cut and bend to fit your application			up to 6 m	

*All LT units are variable speed compressors and are supplied with 3 control resistors to match your application with the most efficient compressor speed.

LT Series of Ice Box Conversion Kits
Simple by Design

All LT units and plates come pre charged with ozone friendly refrigerant and are temperature controlled with an automatic thermostat. These units are very rugged and versatile. All LT units can run on an angle up to 30°, with no capacity loss.



Included with every unit



Mounting Hardware



Easy to Use Reusable Couplings



Automatic Thermostat



Over Sized Air Cooled Condenser

Line kits come standard at 12 feet
Options lengths up to 20 ft